

How to Use RemoteHams on K2AA

SJRA Remote Station Details:

Location: Deer Park Fire Station in Cherry Hill, NJ

39.884382 / 39° 53' 3" N Longitude: -74.9460115 / 74° 56' 45" W

Grid: FM29mv

Transceiver: Yaesu FT-991A

Antennas: MyAntennas EndFed covering 80 - 10 meters and Diamond X50 Vertical for 2 meters and 70 cm bands. Antennas are at approx. 30'

(The screen shots that appear in this tutorial were taken some months ago when the station was under testing at W2JAZ so they will not show K2AA)

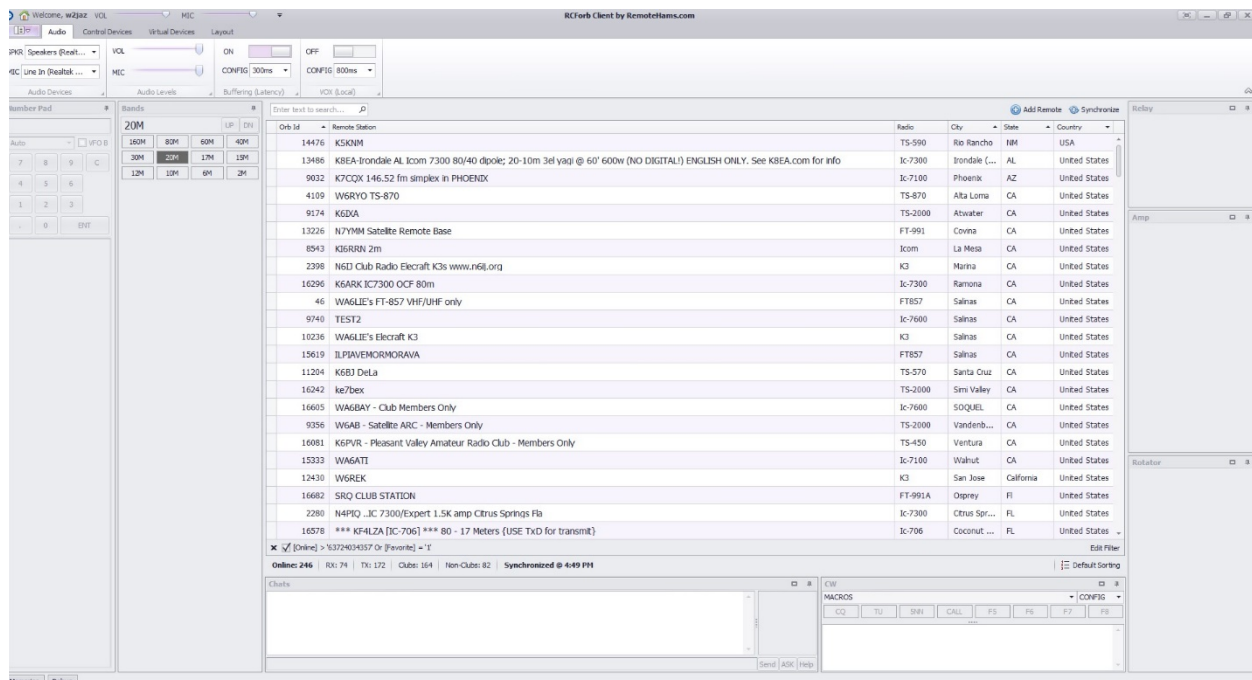
Please follow the steps below to get started on your K2AA RemoteHams experience. **You must operate within your own license class privileges** or your K2AA privileges will be suspended. (Big Brother is watching ☺) When using SSB identify yourself with your own call "operating from K2AA remote station." For CW operation identify first with your call sign/remote or callsign/2 if you are operating from outside the 2 call area. **If you wish to use the remote station you will need to be added to the approved list since our club station is reserved for use only by SJRA members.** Send your request to me at rjlawn@gmail.com. I will authorize your use ASAP and let you know when I have done so.

Step 1 – Use your Internet browser to open <http://www.remotehams.com> and follow the steps on the home page starting with signing up.

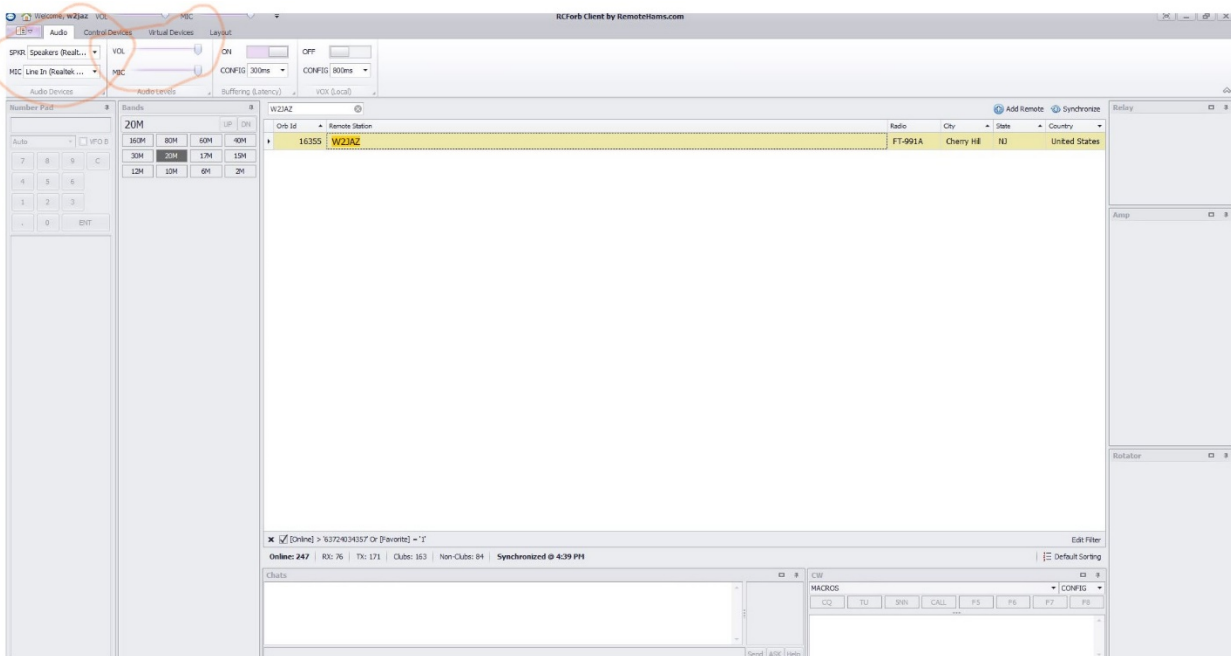
- a. Create a **user name** - your call sign
- b. Create a **password** of your choice and don't forget to save it in a safe place for the future

Step 2 – Download the most recent Public Alpha Alpha version of the RCForb Client software and install it on your computer. <https://www.remotehams.com/forums/index.php/topic,1997.0.html>
Read the tutorials provided.

Step 3 – Open the RCForb Client software and you will see the screen below. The "lobby" shows a long scrolling list of call signs identifying RemoteHams stations around the world.

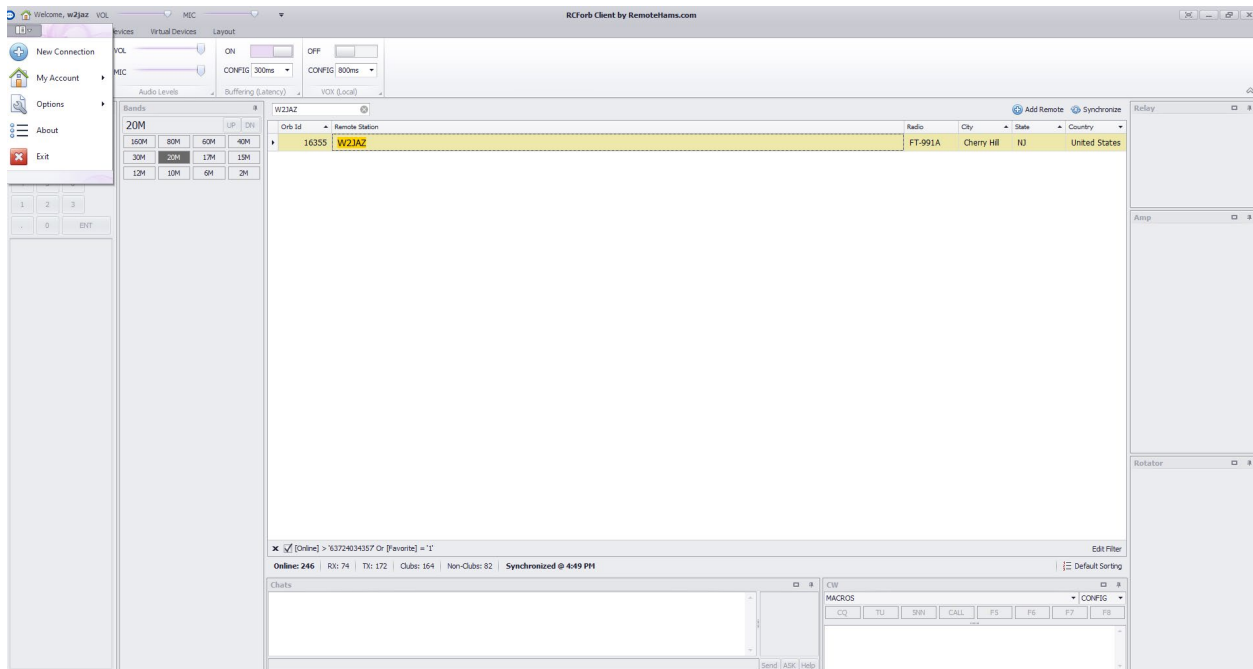


Step 4 – From the pull down menus found near the upper left corner and labeled **“Speaker”** and **“Microphone,”** select the devices you intend to use locally for these functions. A cheap USB headset is a good choice to use, but you can use the built in speaker and microphone in your laptop. I suggest initially setting the microphone slider to 30-40% of full scale.



Step 5 - Use the pull down menu in the extreme upper left hand corner (under the house icon) to select **My Account** when you want to sign out, view your profile, etc. This drop down menu also allows you to **Disconnect** from a station you've connected to. (see image following Step 6)

Step 6 – Type in **K2AA** in the text field just above the list of stations in the lobby of the home screen. This finds our station (see screen shot below). Double click on K2AA to connect and bring up the radio interface. **Hint:** Once you have found K2AA, or any station you want to use, left click on it and then right click to add to your favorites. Once it's saved as a favorite it will always appear at the top of the list in the lobby every time you run the software.



Step 7 - The **Auto Tune** message reminds you to select the **ATU** and then **Tune** button whenever you first login and every time you significantly change frequencies on the HF bands. This is not necessary when operating VHF/UHF as the Diamond X50 has a very low SWR across the entire FM operating segments. The **ATU** button should always be highlighted indicating it is on!



Step 8 – STOP!!! Before going any further please familiarize yourself with the controls including the change band buttons located in the left panel, the CW Keyer and CW Memory & Macro setup panes (bottom right), Memories (bottom left) and so forth. Tune around by either using your mouse on the large tuning knob or by using your mouse and mouse wheel to select and move one of the frequency digits up or down.

It would be useful to download a free copy of the FT-991A manual from the Yaesu website to make yourself more acquainted with the radio's functions and abbreviations. The link to the Yaesu manuals -

<https://www.yaesu.com/indexVS.cfm?cmd=DisplayProducts&ProdCatID=249&encProdID=490C4A71118AD0F4E825E89D821B73BB&DivisionID=65&isArchived=0>

Step 9 – If you want to operate on the clubs repeaters or other local machines you may have to import the memory channels into your client software. Click on **Memories** in the extreme lower left corner to see if memory channels are present. If they are not present select **Sync Remote Memory** on the far right side of the ribbon selections at the bottom of the screen. You can also add new memory channels by selecting **+Add Memory** as shown in the following screen shot.



Step 10 - To transmit on voice in either SSB, FM or C4FM modes use the **TXd** button on the radio control screen. This button acts like a PTT control turning the transmitter on or off. The CW mode activates the keyboard keyer. (I'm working on a way that we might be able to use a WinKeyer with your own key to send cw the traditional way.) The **Config** drop down menu allows you to set the speed and other parameters and the **Macros** drop down menu allows you to set your own macros such as rig, QTH, Name etc. You'll notice that several standard macros such as **CQ TU**, **5nn**, and **Call** are preprogrammed.

IF YOU PUT THE RADIO IN SPLIT MODE (Tx-s) MAKE SURE YOU DISENGAGE SPLIT BEFORE DISCONNECTING from the station!

Digital Modes Operation

There are ways to use the digital modes including WSJT-X and FIDigi by integrating either Ham Radio Deluxe, N1MM+ or DX Labs Commander so stay tuned for another tutorial on using the remote station on digital modes.

For the time being there is no need to reserve time on the remote station. You will immediately see if someone else is using the station once you logon. Through the software you can remotely ask the person if you have permission to transmit. If we begin to have too many conflicts we will develop a sign up system, for example Field Day.